

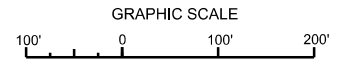
ATLANTIC OCEAN

MATCHLINE SHEET NO. 014 STA. 388+00

MATCHLINE SHEET NO. 012 STA. 355+00

50

CUT-1



NOTES:
1. REFER TO SURVEY NO. 23-011.
2. SEE SHEET NO. 1 FOR SURVEY NOTES.

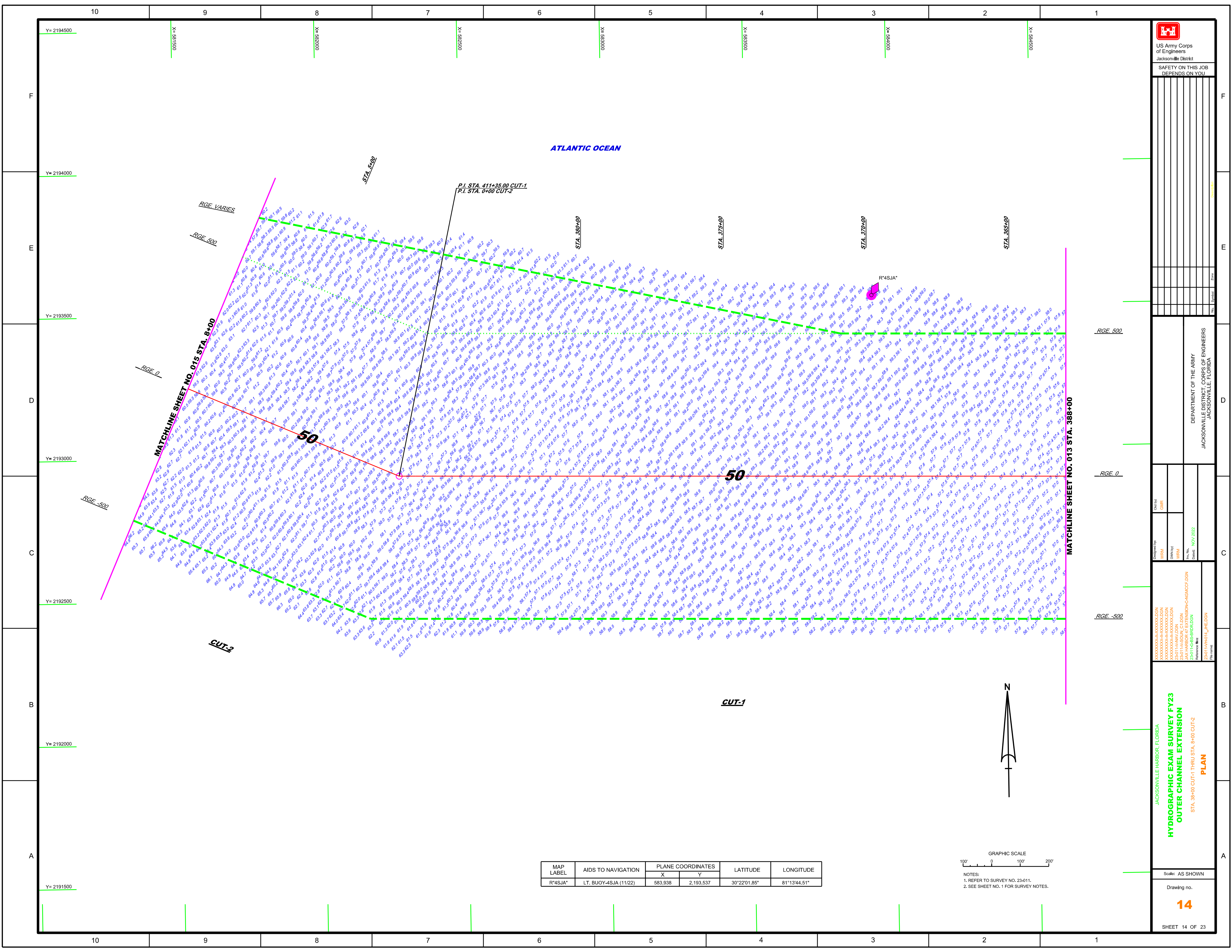
US Army Corps of Engineers
Jacksonville District
SAFETY ON THIS JOB
DEPENDS ON YOU

DESIGNED BY: WRM
CHECKED BY: GHR
DATE: NOV 2022

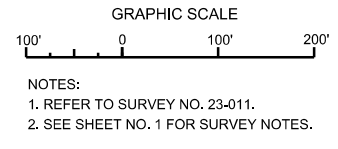
JACKSONVILLE HARBOR, FLORIDA
HYDROGRAPHIC EXAM SURVEY FY23
OUTER CHANNEL EXTENSION
STA. 355+00 THRU STA. 388+00 CUT-1
PLAN

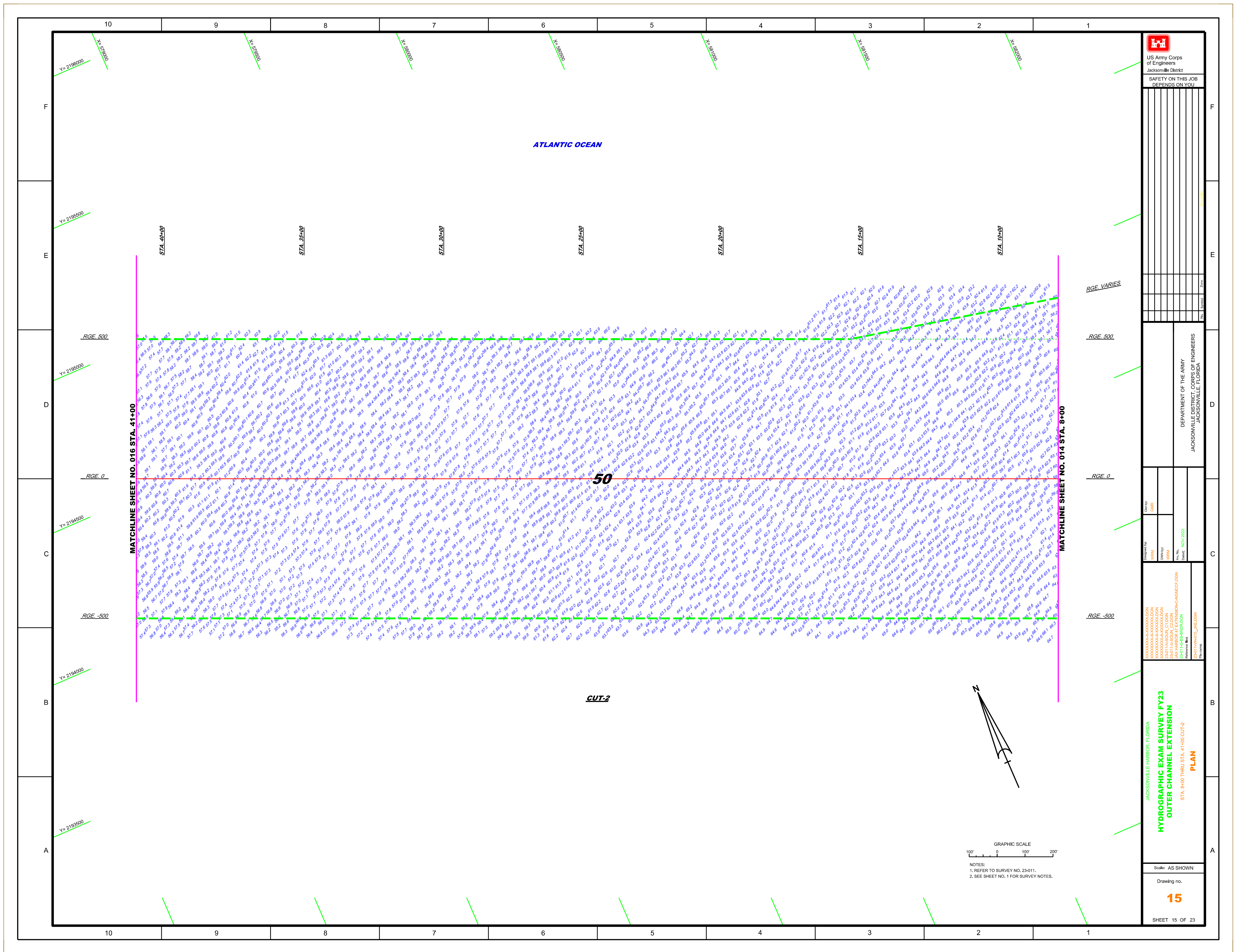
Scale: AS SHOWN
Drawing no. 13
SHEET 13 OF 23

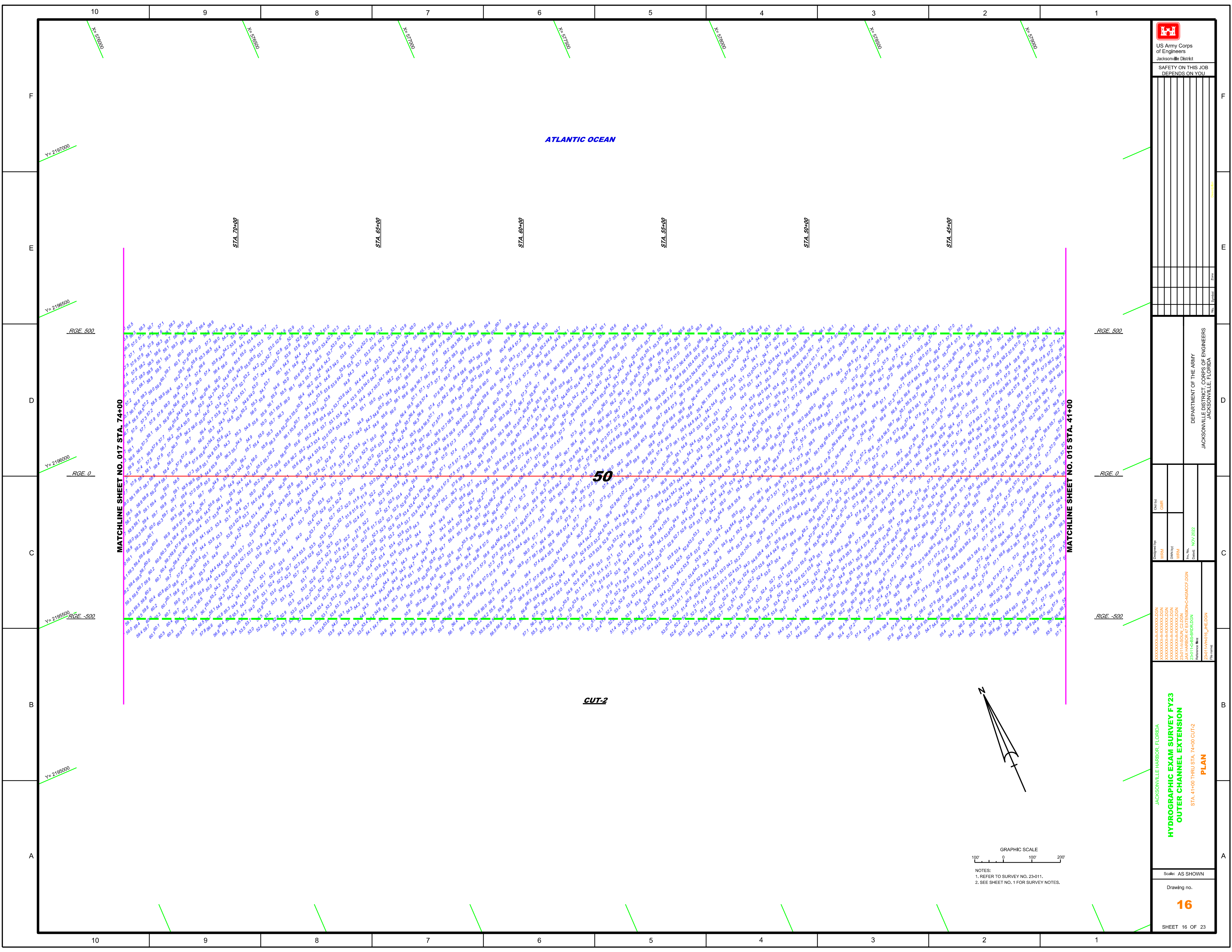
DEPARTMENT OF THE ARMY
JACKSONVILLE DISTRICT, CORPS OF ENGINEERS
JACKSONVILLE, FLORIDA




MAP LABEL	AIDS TO NAVIGATION	PLANE COORDINATES		LATITUDE	LONGITUDE
		X	Y		
R*4SJA*	LT. BUOY-4SJA (11/22)	583,938	2,193,537	30°22'01.85"	81°13'44.51"









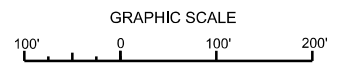
 US Army Corps of Engineers
 Jacksonville District
 SAFETY ON THIS JOB
 DEPENDS ON YOU

DEPARTMENT OF THE ARMY
 JACKSONVILLE DISTRICT, CORPS OF ENGINEERS
 JACKSONVILLE, FLORIDA

Designated By: **WRM**
 Drawn By: **WRM**
 Checked: **NOV 2022**
 Project: **JAX HARBOR 67 EXTENSION-CAIGACCEN**
 Reference File: **J2401-14-H01-L1-HE.DGN**

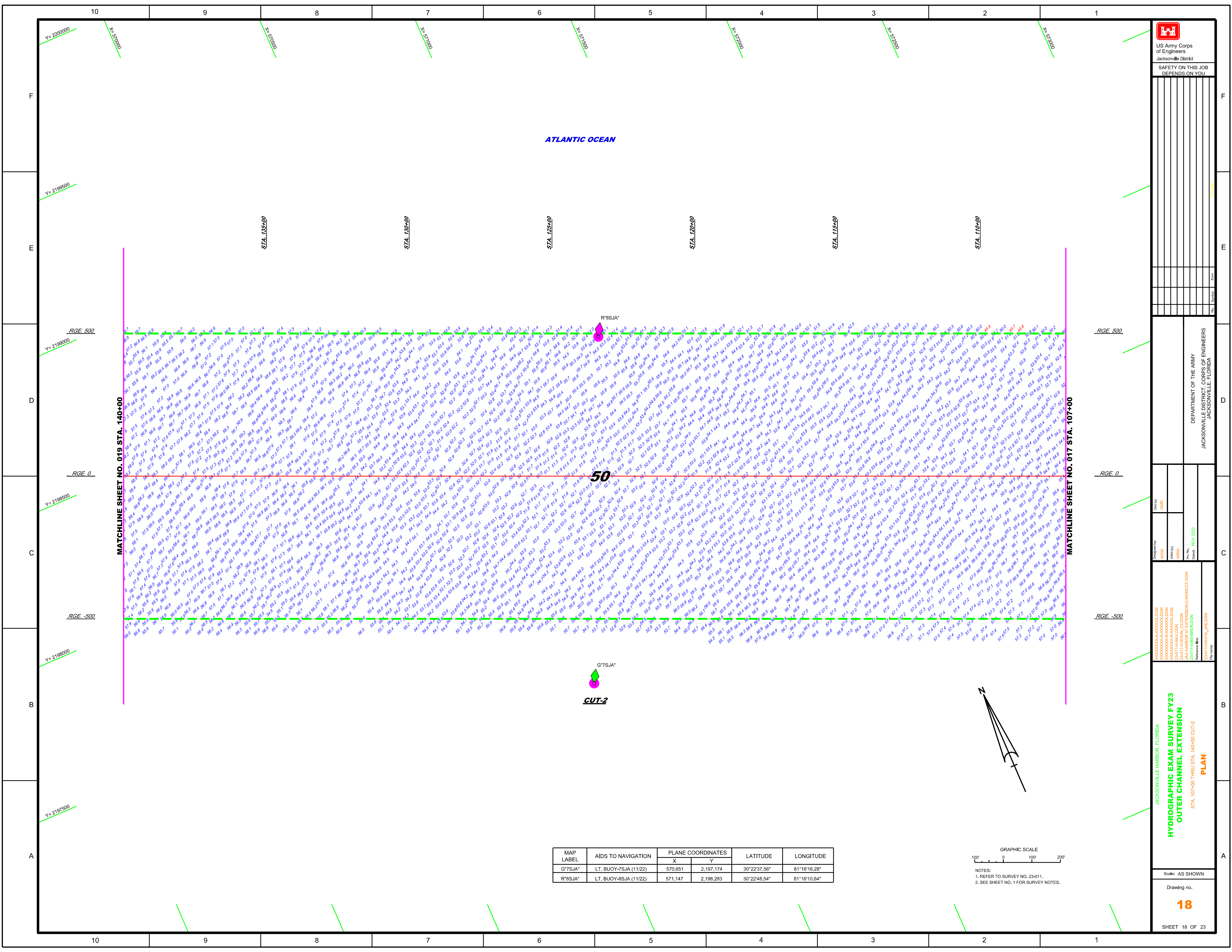
JACKSONVILLE HARBOR, FLORIDA
HYDROGRAPHIC EXAM SURVEY FY23
OUTER CHANNEL EXTENSION
 STA. 41+00 THRU STA. 74+00 CUT-2
PLAN

Scale: AS SHOWN
 Drawing no.
16
 SHEET 16 OF 23

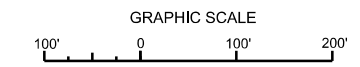


NOTES:
 1. REFER TO SURVEY NO. 23-011.
 2. SEE SHEET NO. 1 FOR SURVEY NOTES.

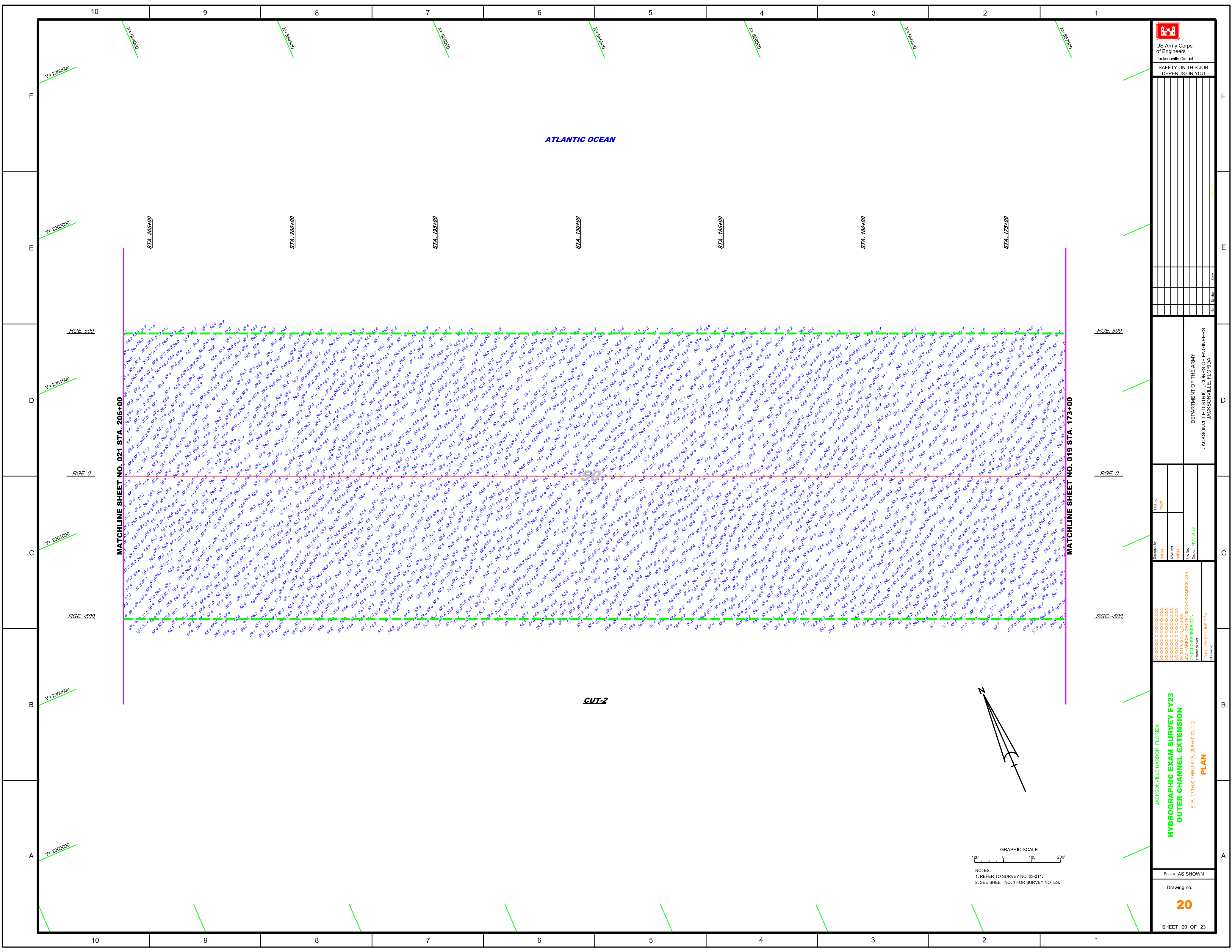
SHEET 16 OF 23



MAP LABEL	AIDS TO NAVIGATION	PLANE COORDINATES		LATITUDE	LONGITUDE
		X	Y		
G7SJA*	LT. BUOY-7SJA (11/22)	570,651	2,197,174	30°22'37.56"	81°16'16.28"
R8SJA*	LT. BUOY-8SJA (11/22)	571,147	2,198,283	30°22'48.54"	81°16'10.64"



NOTES:
1. REFER TO SURVEY NO. 23-011.
2. SEE SHEET NO. 1 FOR SURVEY NOTES.



ATLANTIC OCEAN

CUT-2

MATCHLINE SHEET NO. 021 STA. 206+00

MATCHLINE SHEET NO. 019 STA. 173+00



US Army Corps of Engineers
Jacksonville District

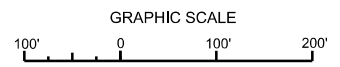
SAFETY ON THIS JOB
DEPENDS ON YOU

DEPARTMENT OF THE ARMY
JACKSONVILLE DISTRICT, CORPS OF ENGINEERS
JACKSONVILLE, FLORIDA

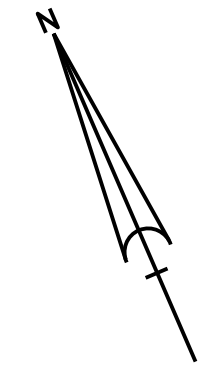
Designed By: GHR
Checked By: GHR
Drawn By: GHR
Project No.: 2401-HARBOR-EXTENSION-CANAL-DCGN
Reference File: 2401-HARBOR-EXTENSION-CANAL-DCGN
Date: NOV 2022

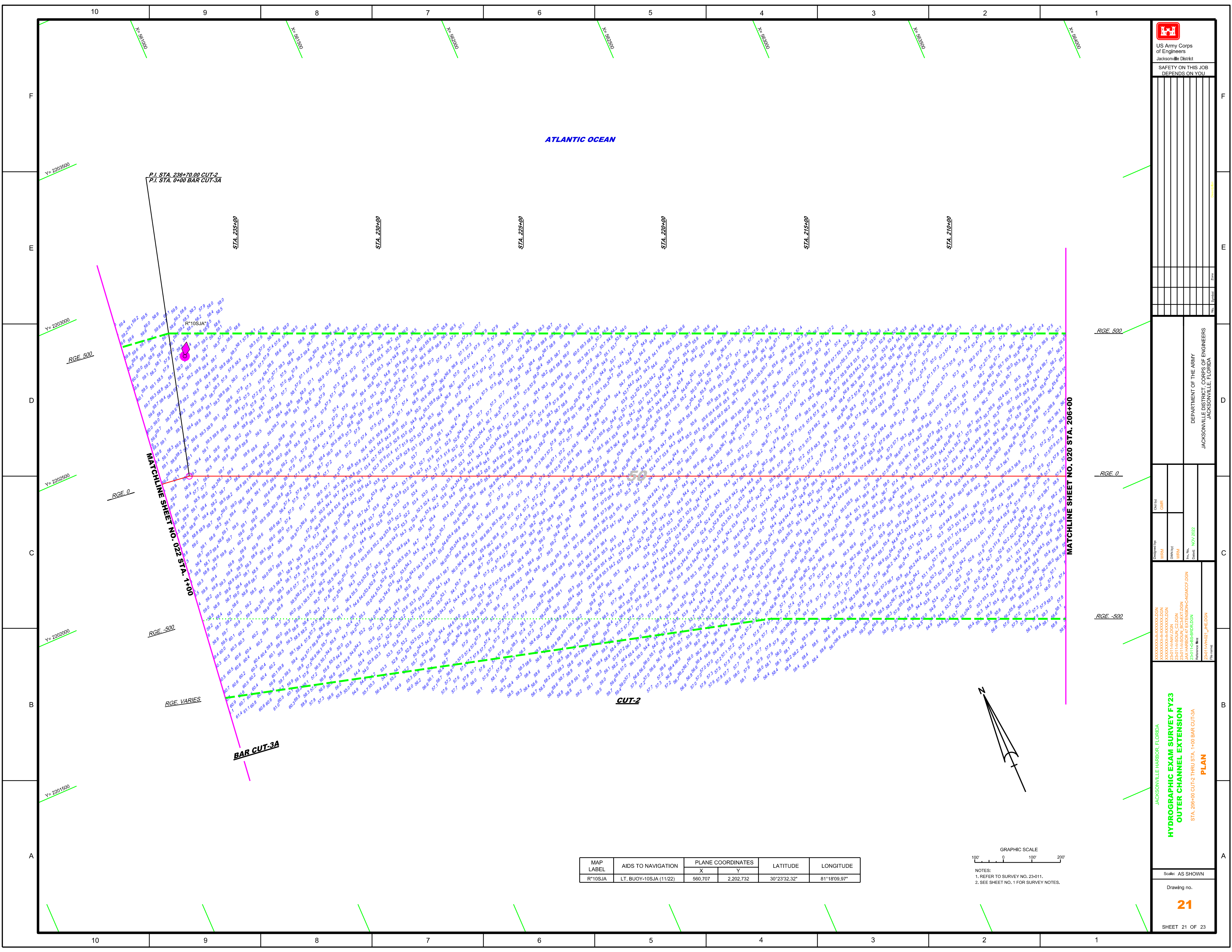
JACKSONVILLE HARBOR, FLORIDA
**HYDROGRAPHIC EXAM SURVEY FY23
OUTER CHANNEL EXTENSION**
STA. 173+00 THRU STA. 206+00 CUT-2
PLAN


Scale: AS SHOWN
Drawing no.
20
SHEET 20 OF 23



NOTES:
1. REFER TO SURVEY NO. 23-011.
2. SEE SHEET NO. 1 FOR SURVEY NOTES.







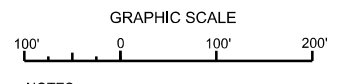
 US Army Corps of Engineers
 Jacksonville District
 SAFETY ON THIS JOB
 DEPENDS ON YOU

DEPARTMENT OF THE ARMY
 JACKSONVILLE DISTRICT, CORPS OF ENGINEERS
 JACKSONVILLE, FLORIDA

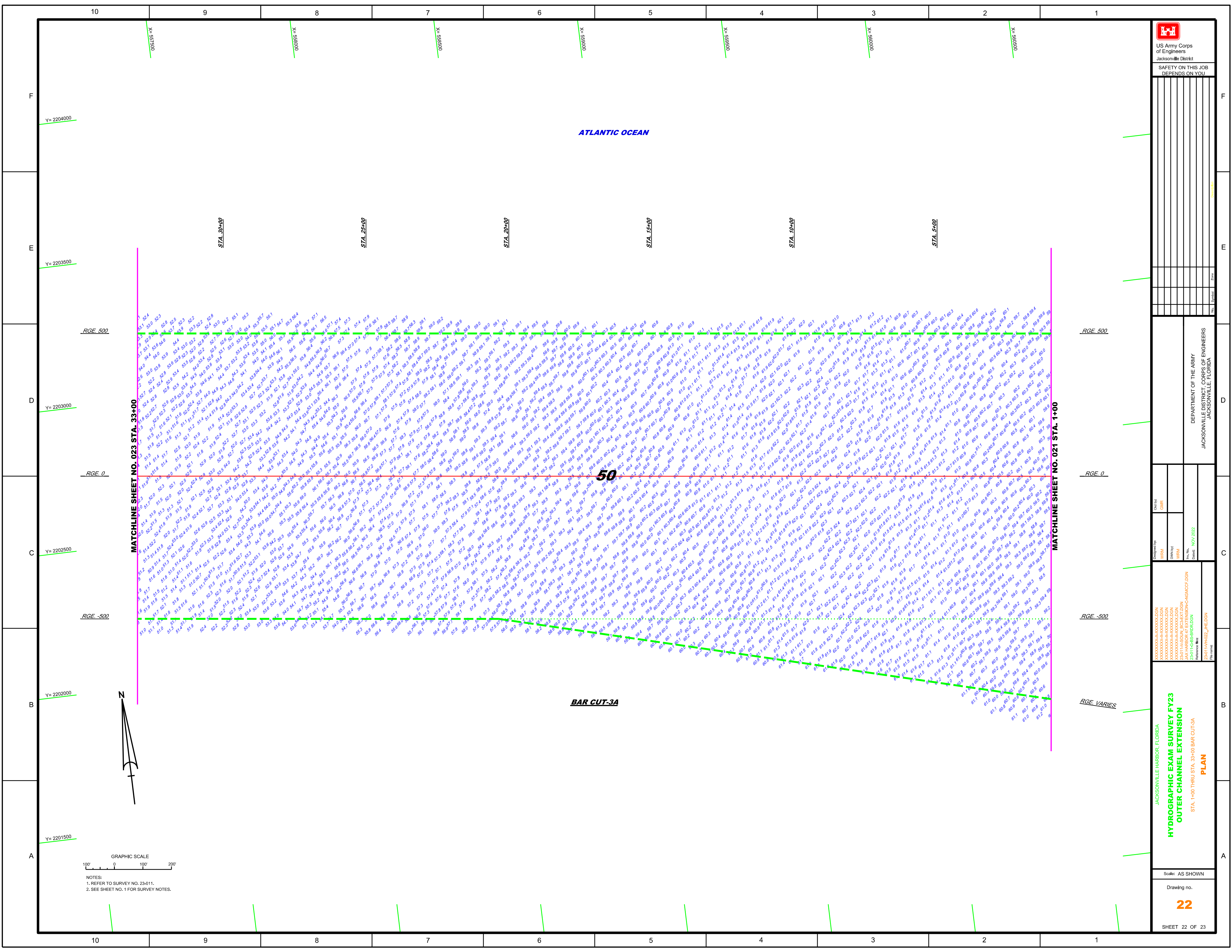
Designed by: WRM
 Drawn by: WRM
 Checked by: WRM
 Date: NOV 2022


JACKSONVILLE HARBOR, FLORIDA
HYDROGRAPHIC EXAM SURVEY FY23
OUTER CHANNEL EXTENSION
 STA. 206+00 CUT-2 THRU STA. +00 BAR CUT-3A
PLAN

MAP LABEL	AIDS TO NAVIGATION	PLANE COORDINATES		LATITUDE	LONGITUDE
		X	Y		
R*10SJA	LT. BUOY-10SJA (11/22)	560.707	2,202.732	30°23'32.32"	81°18'09.97"



NOTES:
 1. REFER TO SURVEY NO. 23-011.
 2. SEE SHEET NO. 1 FOR SURVEY NOTES.




 US Army Corps of Engineers
 Jacksonville District
 SAFETY ON THIS JOB
 DEPENDS ON YOU

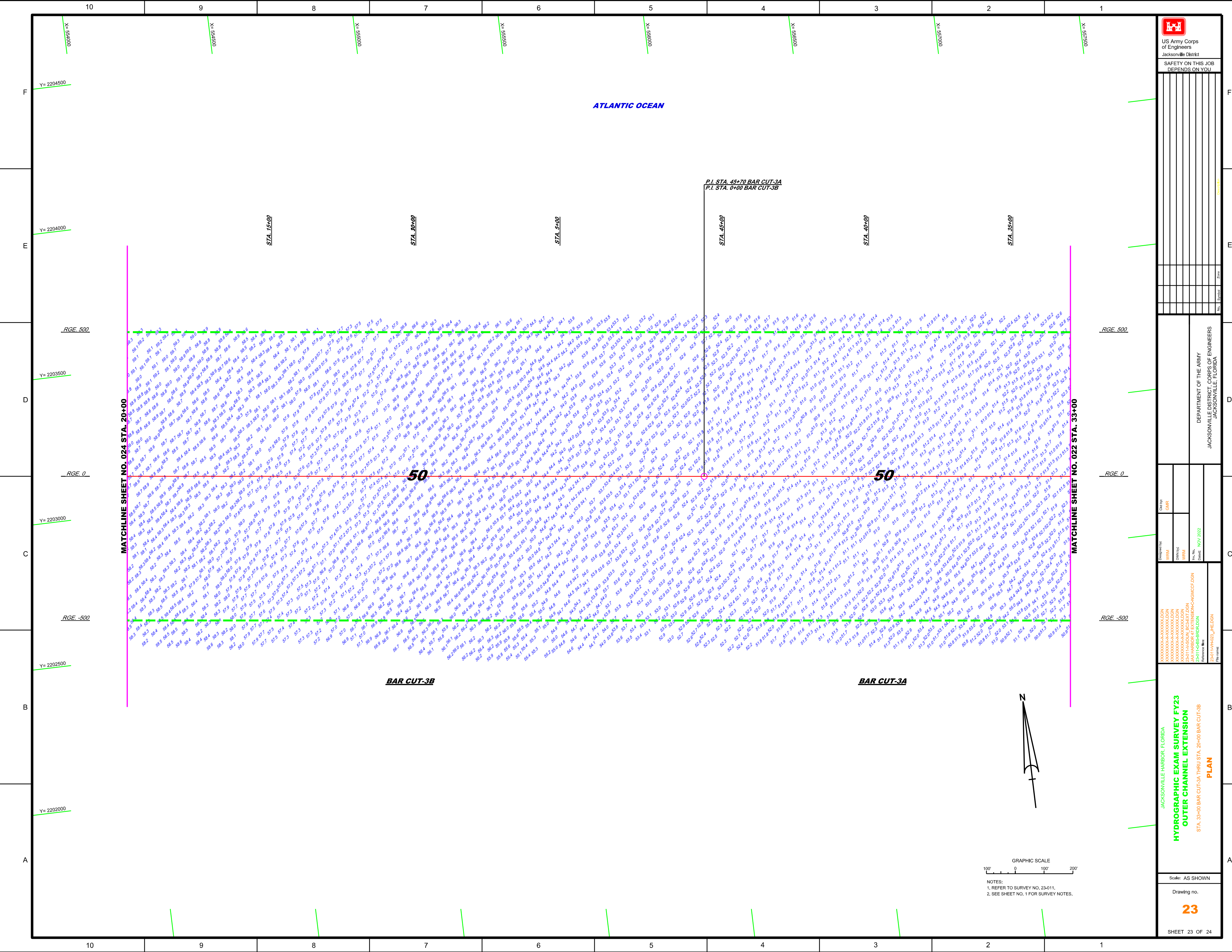
Designed By: WRM	Checked By: GHR
Drawn By: WRM	Approved By: WRM
Date: NOV 2022	Project No.: 240114-000-0000
Reference File: 240114-000-0000	File Name: 240114-000-0000

JACKSONVILLE HARBOR, FLORIDA
HYDROGRAPHIC EXAM SURVEY FY23
OUTER CHANNEL EXTENSION
 STA. 1+00 THRU STA. 33+00 BAR CUT-3A
PLAN

Scale: AS SHOWN
 Drawing no. **22**
 SHEET 22 OF 23

GRAPHIC SCALE
 100' 0 100' 200'
 NOTES:
 1. REFER TO SURVEY NO. 23-011.
 2. SEE SHEET NO. 1 FOR SURVEY NOTES.





US Army Corps of Engineers Jacksonville District SAFETY ON THIS JOB DEPENDS ON YOU	
<p> HYDROGRAPHIC EXAM SURVEY FY23 OUTER CHANNEL EXTENSION STA. 33+00 BAR CUT-3A THRU STA. 20+00 BAR CUT-3B PLAN </p>	<p> JACKSONVILLE HARBOR, FLORIDA DEPARTMENT OF THE ARMY JACKSONVILLE DISTRICT, CORPS OF ENGINEERS JACKSONVILLE, FLORIDA </p>
Scale: AS SHOWN Drawing no. 23 SHEET 23 OF 24	

Check By: GHR
 Designated By: WRM
 Date: NOV 2022
 Project: JACK HARBOR EXTENSION-CAVIGACC-DGN
 Reference File: Z:\011\HARZL_PHE.DGN

NOTES:
 1. REFER TO SURVEY NO. 23-011.
 2. SEE SHEET NO. 1 FOR SURVEY NOTES.

